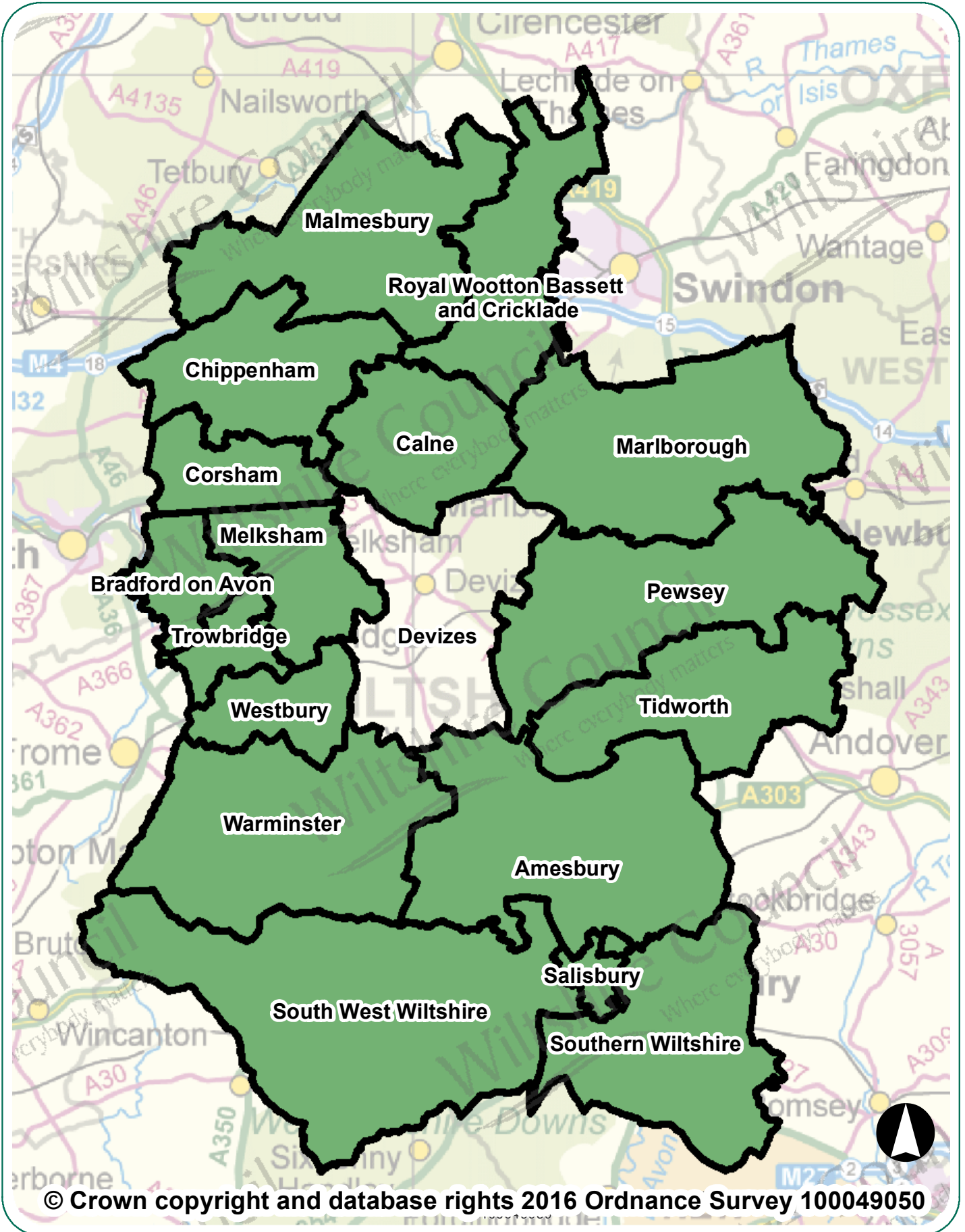


Devizes Area Board Highway Information



Devizes Area Board Highway Information

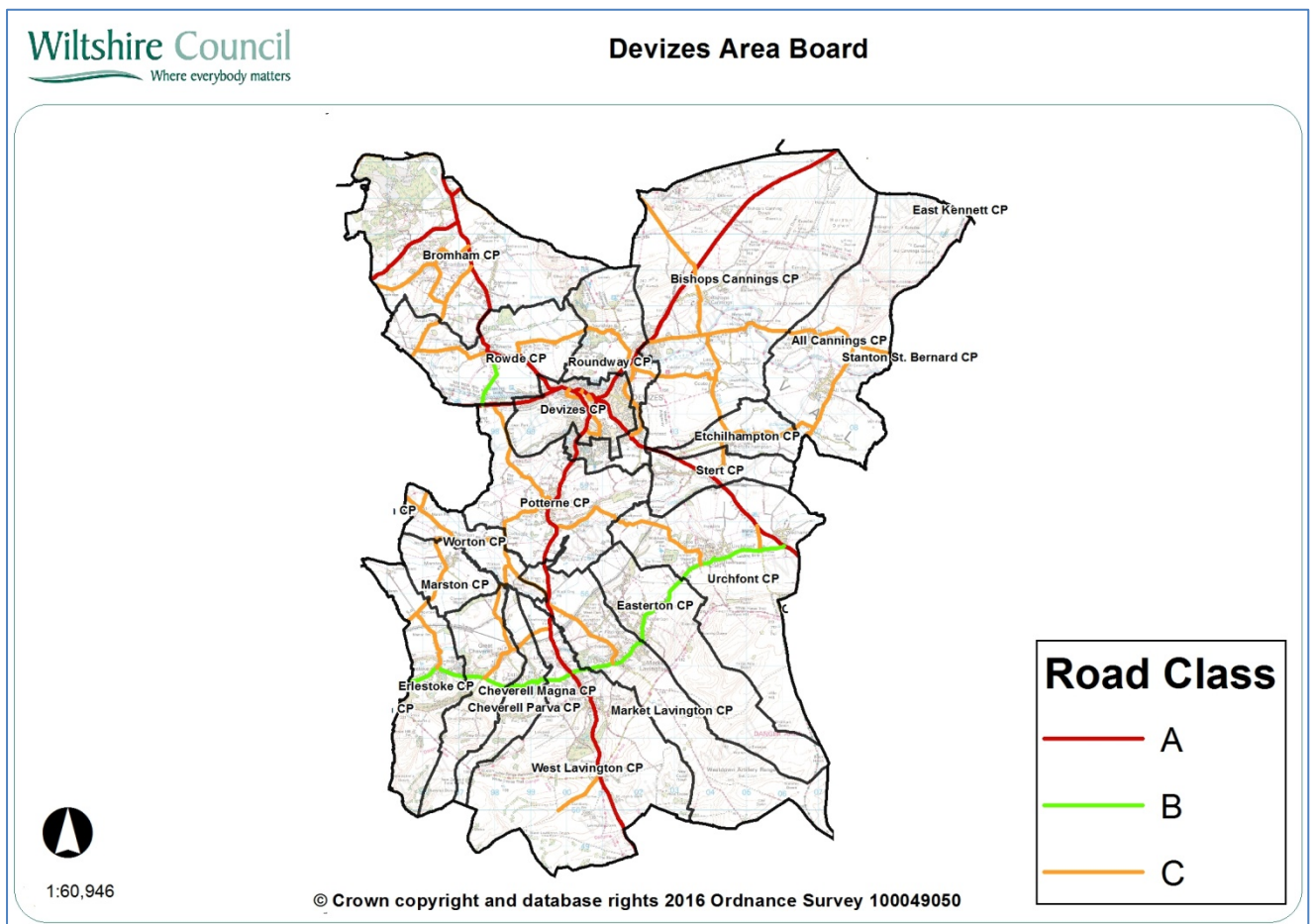
Introduction

This document summarises highway information for your area board. It lists the recent highway and related work carried out by Wiltshire Council, including the road resurfacing carried out during the first two years of the 'Local Highways Investment Fund 2014 – 2020', and includes other information which should be of interest.

Further information on the Council's activities is available at the website www.wiltshire.gov.uk. If you wish to report a specific highway issue please use My Wiltshire. Details are provided at the end of this document.

Parishes in the community area are:

Etchilhampton, Bishops Cannings, All Cannings, Roundway, Potterne, Worton, Marston, Erlestoke, Cheverell Magna, Cheverell Parva, West Lavington, Market Lavington, Easterton, Urchfont, Stert, Devizes, Bromham, Rowde



Network statistics in your area

Road length by class

Road type	Urban (km)	Rural (km)
A Class Roads	17.95	31.37
B Class Roads	8.28	6.35
C Class Roads	21.53	55.5
Unclassified Roads	75.44	38.89
Total	123.2	132.11
	Overall Total	255.31

The council categorises its roads to reflect their importance. This enables an effective assignment of highway inspection frequencies and maintenance standards.

Highway assets in your area

The council keeps an inventory of its highway assets in order to assist planning its highway maintenance. Important statistics relating to your board area are:

Asset Type	Measure
Carriageway	255.31 km
Footways adjacent to road	152 km
Footways (linked)	18.57 km
White road centre lines	114 km
Road kerbs	180 km
Grass verge (maintained)	351 km
Drainage grips	1, 936 number
Drainage pipe grips	149 number
Drainage gullies	5,517 number
Road signs	2, 328 number
Street lights	3,620 number

Major highway maintenance

Road resurfacing

Wiltshire has over 3,000 miles of road. The Council's 'Local Highways Investment Fund 2014 – 2020' is making a massive investment to improve the condition of the roads in Wiltshire over six years. The programme of work started in April 2014, and is designed and supervised by the Council's consultants Atkins, with the work carried out by our main highway contractors Tarmac and Eurovia.

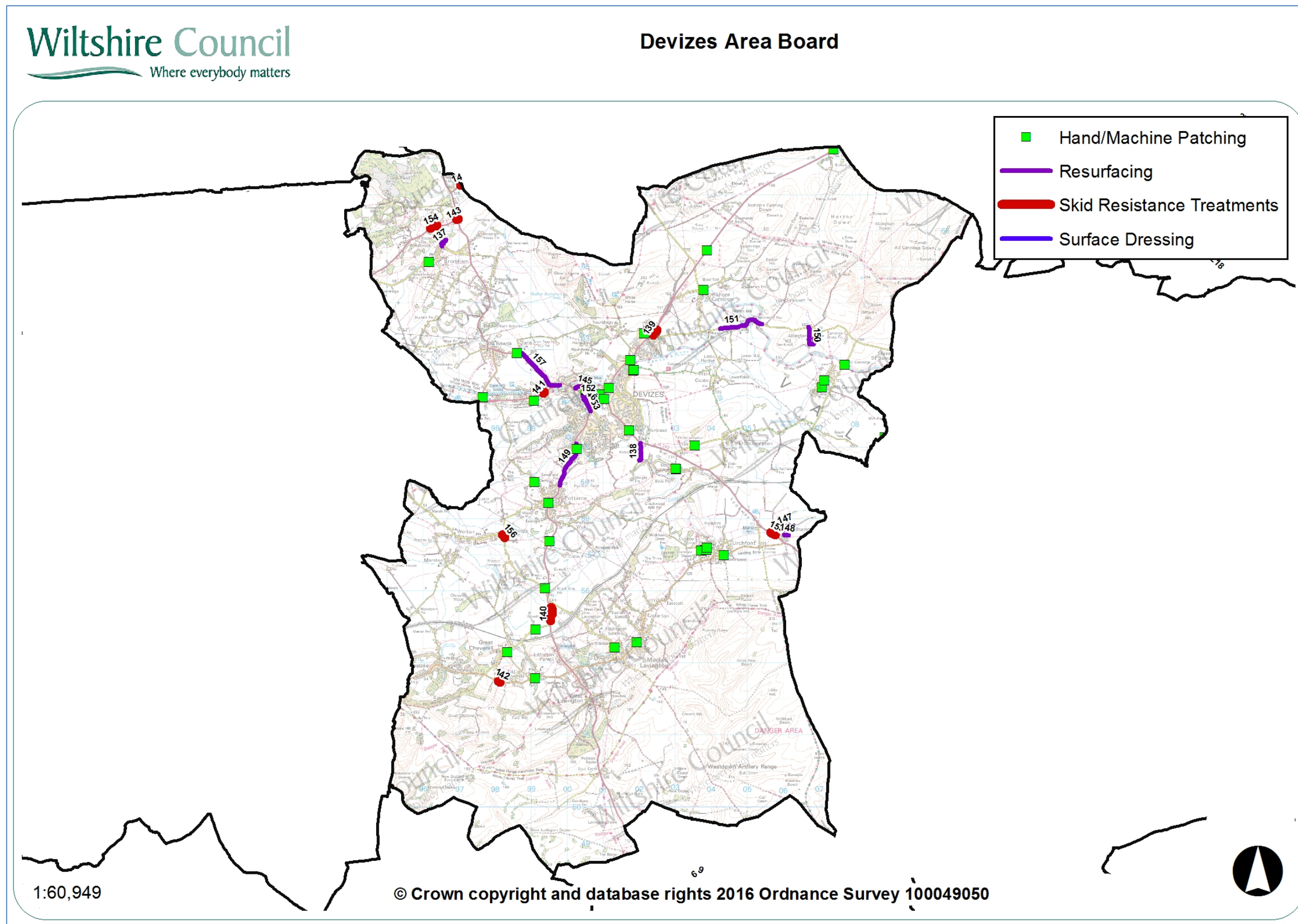
The work carried out in the first two years of the programme has improved a considerable number of the roads in previously poor condition. The locations of sites treated in recent years are shown below.

Carriageway repairs

As well as resurfacing roads other works are undertaken to make localised repairs to keep the roads safe. The works undertaken in your area since 2014 are shown on the map below.

The wet winter and flooding in previous years has resulted in substantial damage to the road network. It is important that serious defects are treated promptly to keep the roads safe. The Council currently operates four Pothole teams that respond to urgent issues to keep the roads safe.

Plan showing major maintenance schemes & hand/machine patching sites completed since 2014



Major maintenance completed since 2014

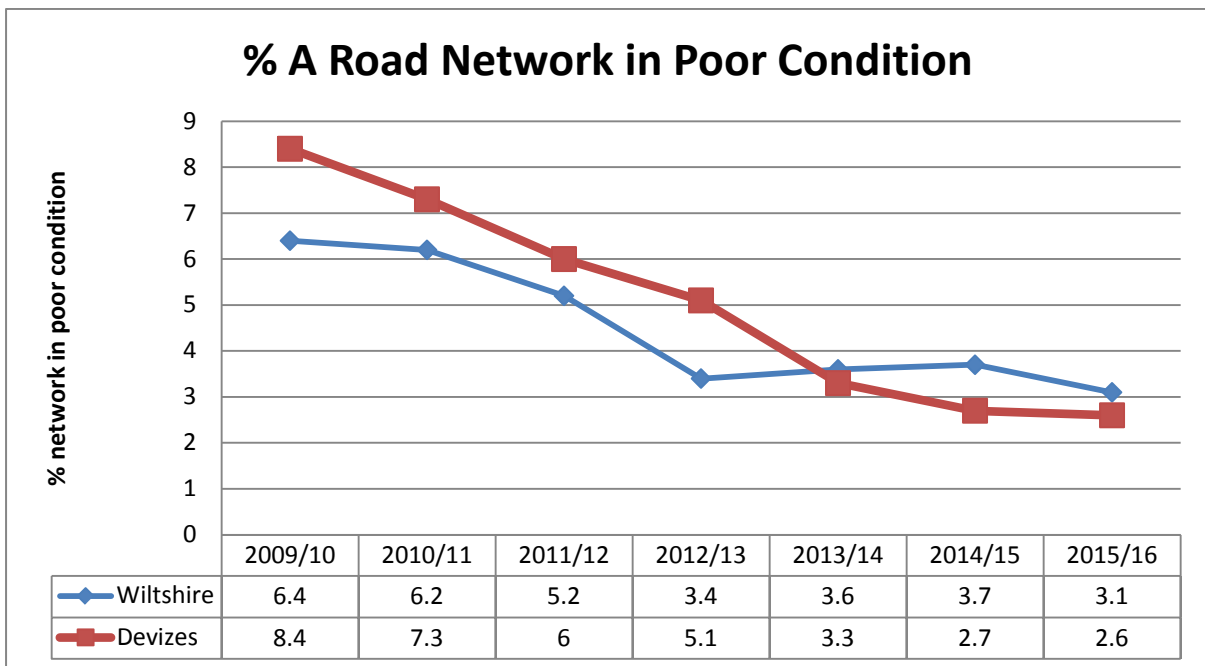
No	Location	Works
137	Greystones, Bromham	Resurfacing
138	Sleight Lane, Devizes	Resurfacing
139	Horton Road Roundabout To Start Of Dual Carriageway	Skid Resistance Improvements
140	C40 Cheverell Road To C20 Black Dog crossroads	Skid Resistance Improvements
141	Caen Hill Gardens To A342 Dunkirk Hill	Skid Resistance Improvements
142	Townsend Great Cheverell To 40mph Little Cheverell	Skid Resistance Improvements
143	Westbrook Rd (60mph To A342) Bromham	Skid Resistance Improvements
144	A3102/A342 To Back Lane To Back Lane	Skid Resistance Improvements
145	Devizes A361 New Park Street incl. Gains Lane	Resurfacing
146	Wine Street & High Street, Devizes	Resurfacing
147	The Cartway, Plum Lane, Wedhampton	Resurfacing
148	The Cartway, Plum Lane, Wedhampton	Resurfacing
149	A360 Potterne Village to Devizes	Resurfacing
150	UC Allington Loop	Resurfacing
151	C8 Horton Village	Resurfacing
152	West Central Car Park, Devizes	Resurfacing
153	A360 Long Street, Devizes	Resurfacing
154	Westbrook Road, Bromham	Skid Resistance Improvements
155	A342 at Wedhampton	Skid Resistance Improvements
156	Bend at junction Cuckolds Green, Worton	Skid Resistance Improvements
157	Dunkirk Hill to Rowde	Resurfacing

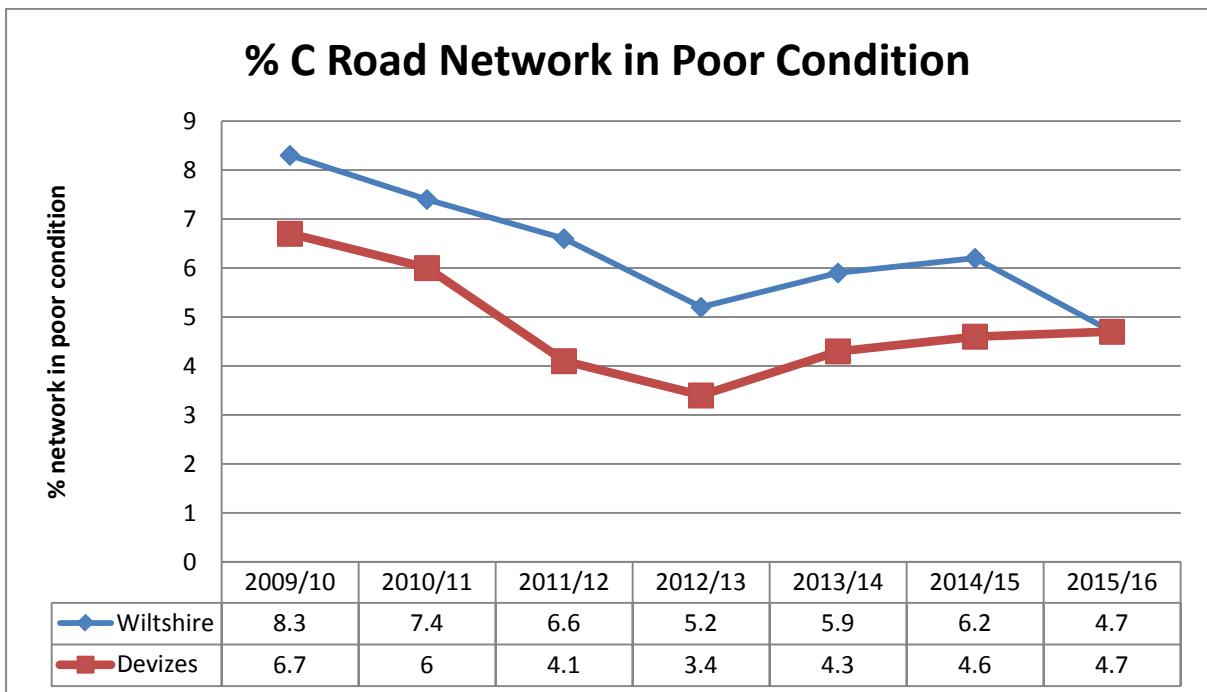
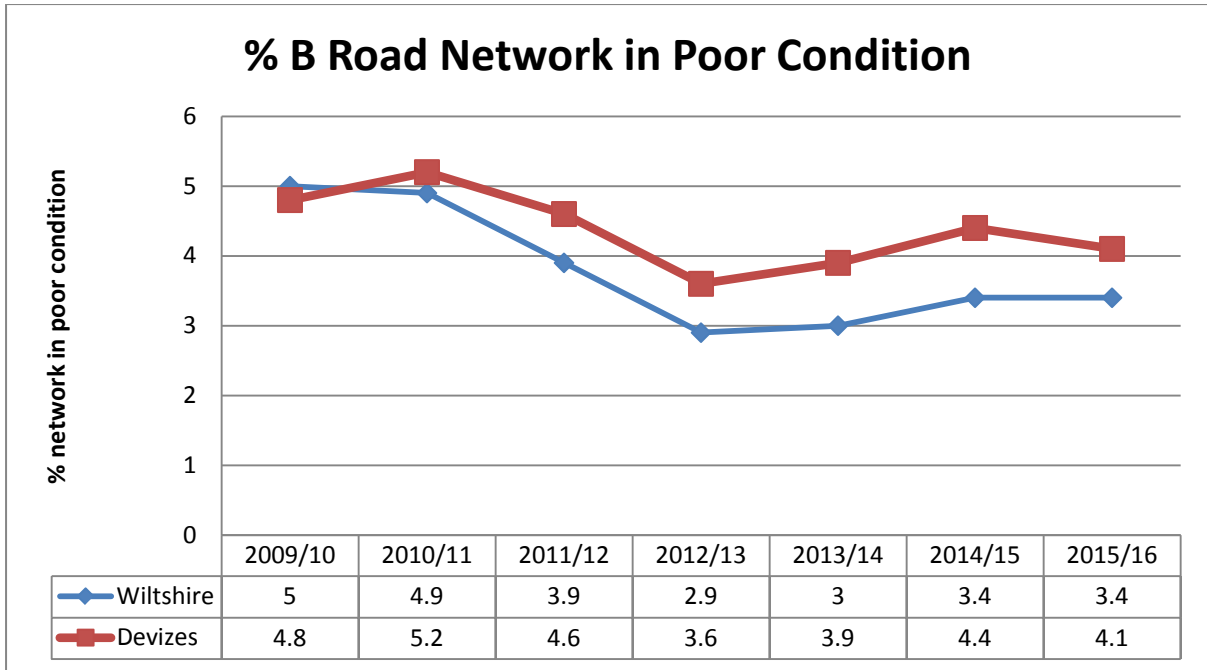
Highway conditions and technical surveys in your area

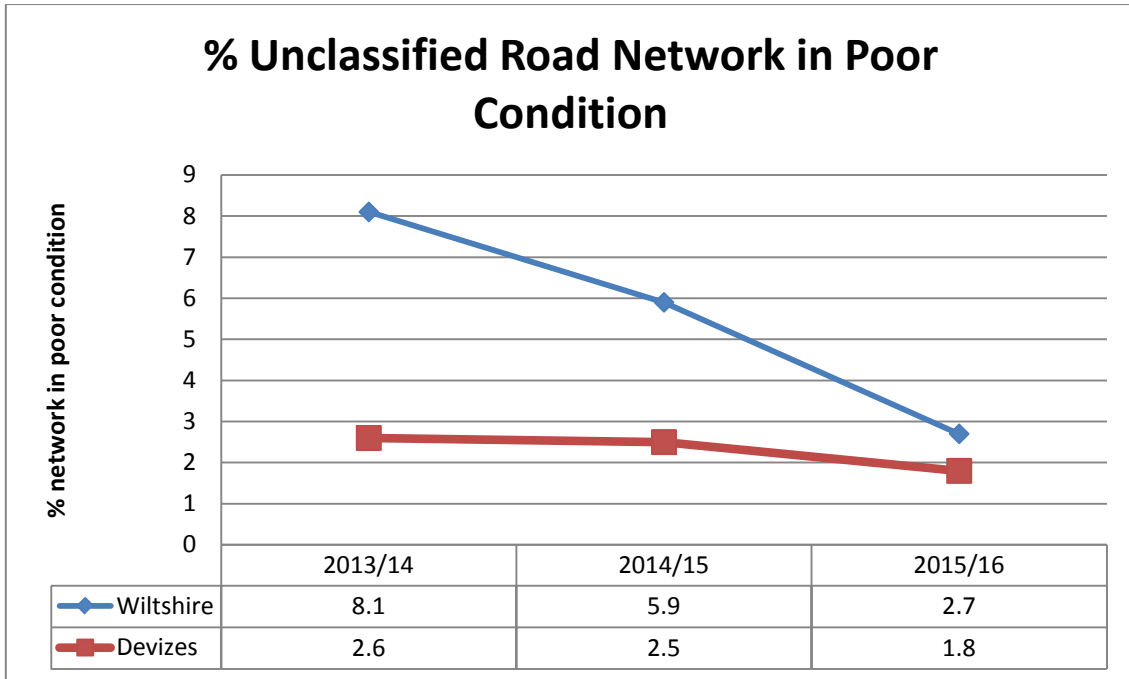
Roads deteriorate in condition because of various factors, including traffic volumes, ground conditions, and weather and drainage issues. Technical surveys of the condition of the highway network are carried out annually and the information is used to help prioritise schemes. Road safety is the priority, and maintaining adequate skid resistance on the busy high speed roads is vital.

The surveys include the use of a vehicle equipped with lasers and cameras to record road surface condition, which allows us to report on road conditions to the Department for Transport and to prioritise maintenance work. Other surveys include measuring skid resistance on the busier roads.

The road conditions in your area are shown below. It should be noted that low numbers are good because it indicates that less road length should be considered for treatment. More detailed information is shown in Appendix A.







Integrated transport, bridge and drainage works

Integrated transport

The Council's traffic engineering team work with our contractors to plan and deliver a range of projects to the local community, most notably through the Area Boards and Community Area Transport Groups (CATGs). The schemes range in size and complexity from simple sign installation through to more complex road safety and improvement schemes.

Bridges

The Council regularly inspects its bridges and other highway structures. There is a programme of renewal and refurbishment works to keep them in good condition, as well as having to respond to damage caused by collisions.

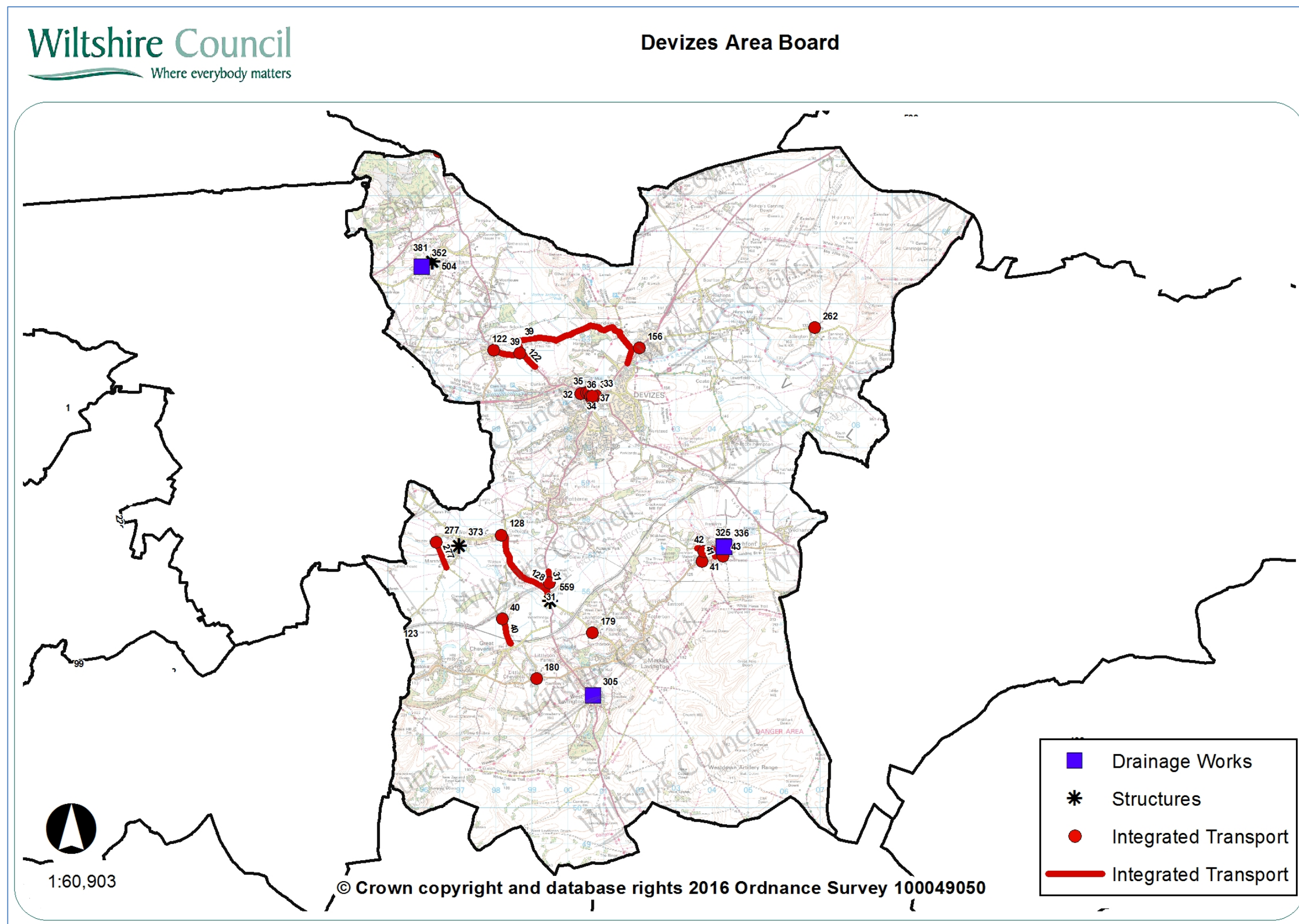
Drainage

Programmes of drainage investigations, repairs and flood alleviation schemes are undertaken throughout the year, but the flooding in recent years has meant that there has been a need to respond immediately to flooding issues, as well as dealing with previously identified problem sites. The drainage improvement and flood alleviation work is co-ordinated through the Council's Operational Flood Working Groups that include the Environment Agency, Wessex Water, other organisations and stakeholders.

Recent work in your area

The Integrated Transport, Bridge and Drainage schemes carried out in your area since 2015 are listed below.

Plan showing completed integrated transport, bridge and drainage schemes since 2015



Integrated transport schemes since 2015

No	Location	Description
179	Market Lavington	Spin hill / Ledge Hill junction signs
180	Little Cheverell	Low Road unsuitable for HGV signs
262	Allington	C8 at Allington - 40 mph speed limit
277	Marston	Marston Speed Limit Signing
31	A360	A360 Frieth nameplates
32	Devizes	Various locations cycle parking Winkworth
33	Devizes	Various locations cycle parking O/s Roses
34	Devizes	Various locations cycle parking Central car Park
35	Devizes	Various locations cycle parking Monday Market Street
36	Devizes	Various locations cycle parking opposite Tesco
37	Devizes	Various locations cycle parking Sheep St
38	Devizes	Various locations cycle parking outside Sainsbury
39	C249	C class speed limit reviews C249 implementation
40	Great Cheverell	Green Lane speed limit investigation
41	Urchfont	20mph speed limit implementation
42	Urchfont	20mph speed limit implementation
43	Urchfont	Crossing point and bus stop hardstanding
122	A342 Rowde	Tourism signs to the Rowdey Cow Caf
128	C20 Worton	New Speed Limit - signs and markings
156	Devizes	Directions signs to Air Training Corps / ACF

Bridge schemes since 2014

No	Location	Description
373	Marston	Plough Footbridge, Marston, Rebuild Elevations and Parapet
381	Bromham	Retaining wall Chantry Church Hill Bromham repair following road traffic collision
504	Bromham	Retaining wall Chantry Church Hill Bromham repair following road traffic collision
559	Market Lavington	General re-pointing

Drainage works since 2015

No	Location	Description
305	Devizes	New surface water system
325	Devizes	Install new system/headwall and pipework
336	Devizes	Culvert reconstruction
352	Devizes	Rebuild of existing outfall system

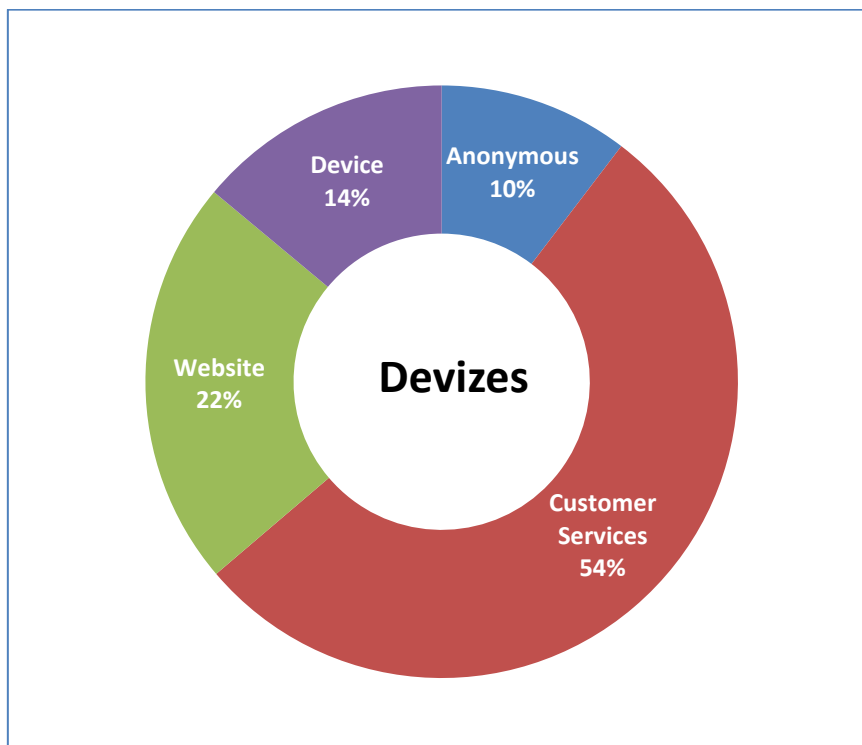
My Wiltshire



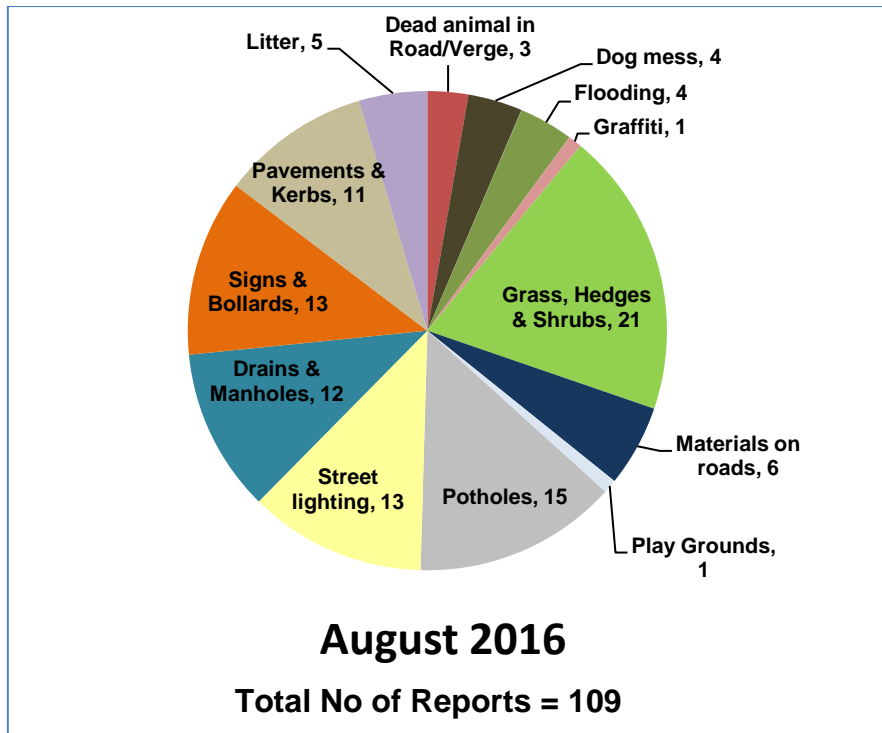
My Wiltshire provides an easy way to report highway issues, including using the Council's website. We have an app so you can report on the go using your smartphone. The My Wiltshire app is available to download at both the [App Store](#) (for iPhones and iPads), from [Google Play](#)[™] (for Android phones) and Windows Store. You can attach information such as photos or videos and pinpoint the location of your report using the mapping software on your phone.

A summary of recent reports in your area is shown below, and further details are shown in Appendix B.

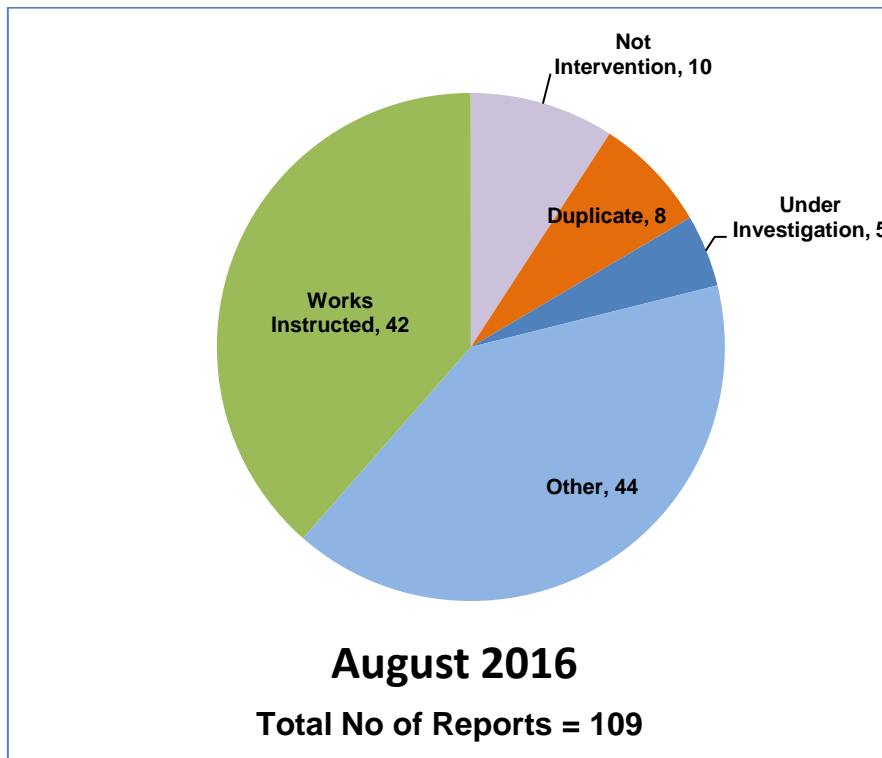
Customer reporting methods in your area



Customer reports in your area for the month of August 2016



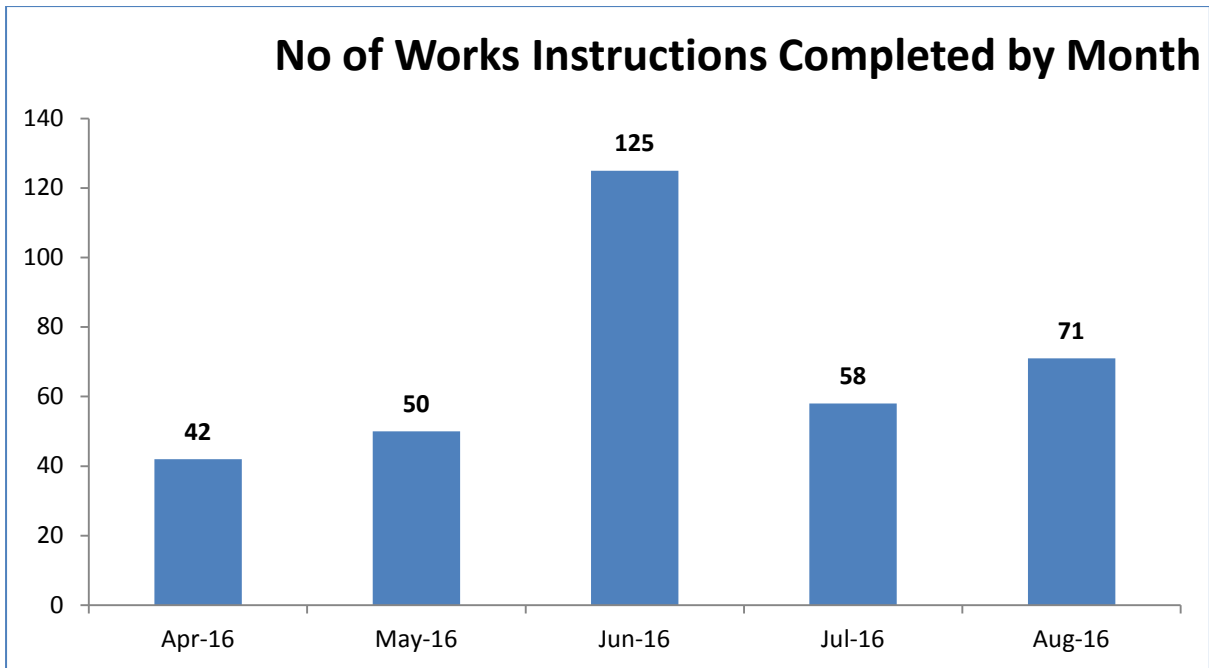
Actions following recent reports in your area



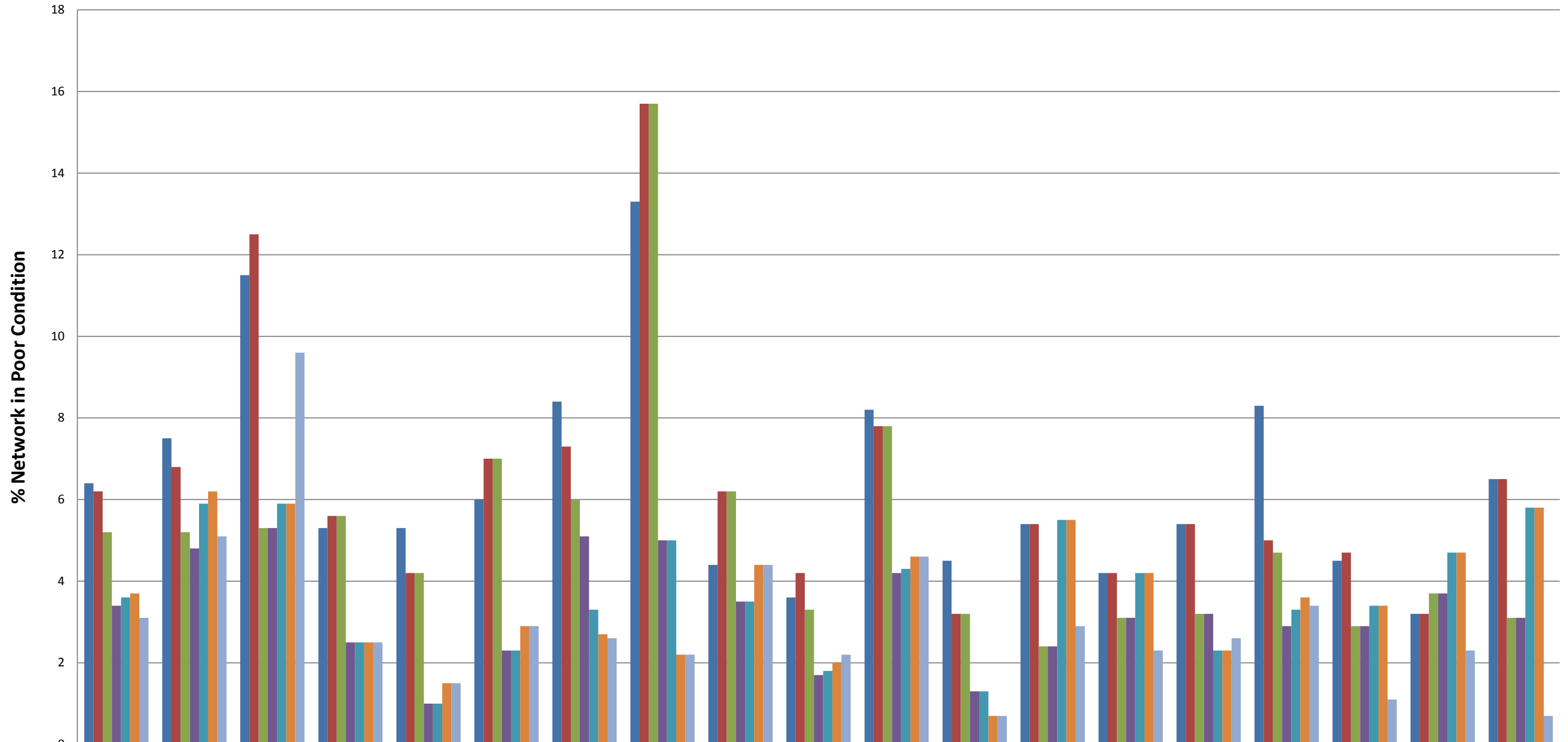
Action definitions

1. **Not Intervention** – the technician has attended site and classified the defect as not meeting intervention levels as per the Highway Inspection Manual 2013 or in the case of streetscene reports, service level agreements.
2. **Duplicate** – a report has already been received in relation to this issue and a works instruction has previously been passed to the contractor to undertake a repair/carry out the necessary works.
3. **Under Investigation** – this issue is currently with a Highways technician or engineer – they may be awaiting information from the customer or the issue requires further investigation e.g. wet weather inspection, drainage survey, exploratory excavation, ownership query.
4. **Discretionary works** – this issue is not a highway safety issue and has been identified as one which falls within the remit of the parish steward scheme.
5. **Other** – the issue has been identified as one which does not require any action by Local Highways. This could be for a number of reasons –
 - the report has been cancelled by the user,
 - there is insufficient information provided to assess the issue and the customer has not provided contact details,
 - the issue is not the responsibility of Wiltshire Council e.g. un-adopted highway, gas/electricity/telephone/water/cable company, Highways England, housing association,
 - the technician attended site and nothing was found at the stated location
 - the issue has been passed to another service within Wiltshire Council e.g. rights of way, bridges.
6. **Works Instructed** – the technician has assessed the issue as requiring works to be carried out and has either dealt with the issue personally or has referred it to the contractor for repair.

Highway defects completed in your area in recent months

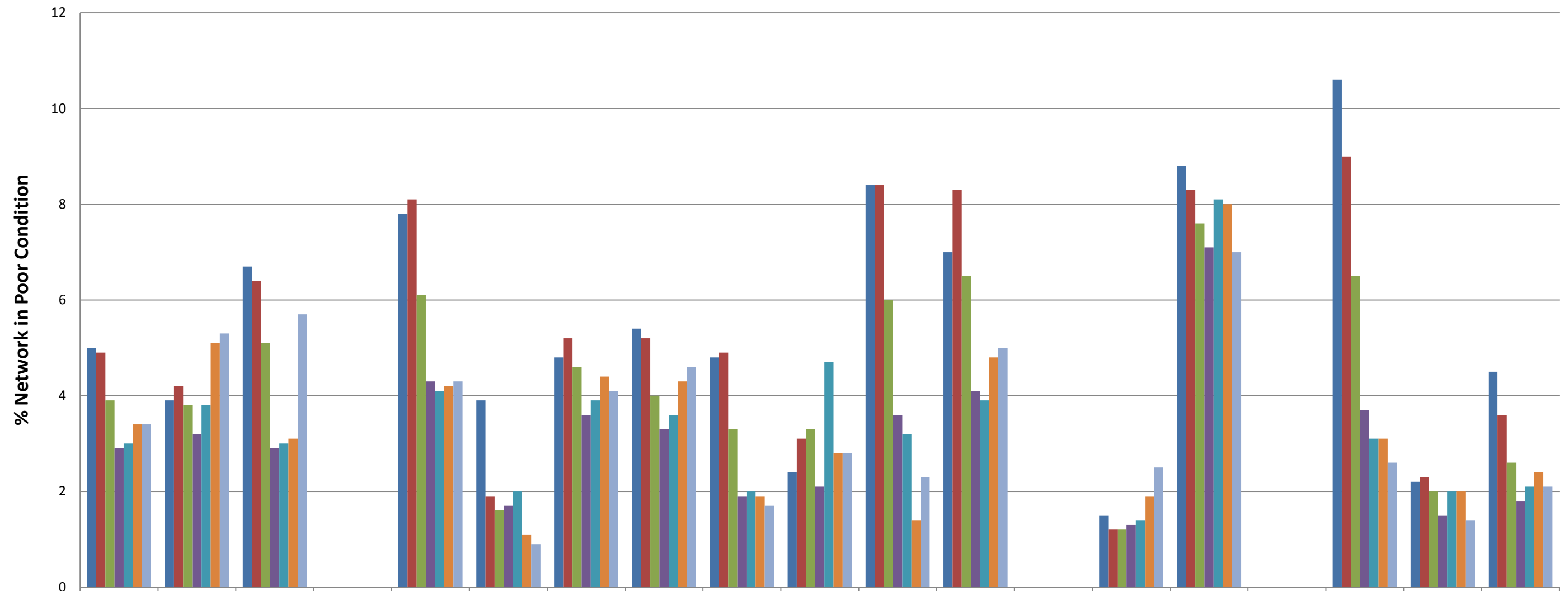


% A Road Network in Poor Condition



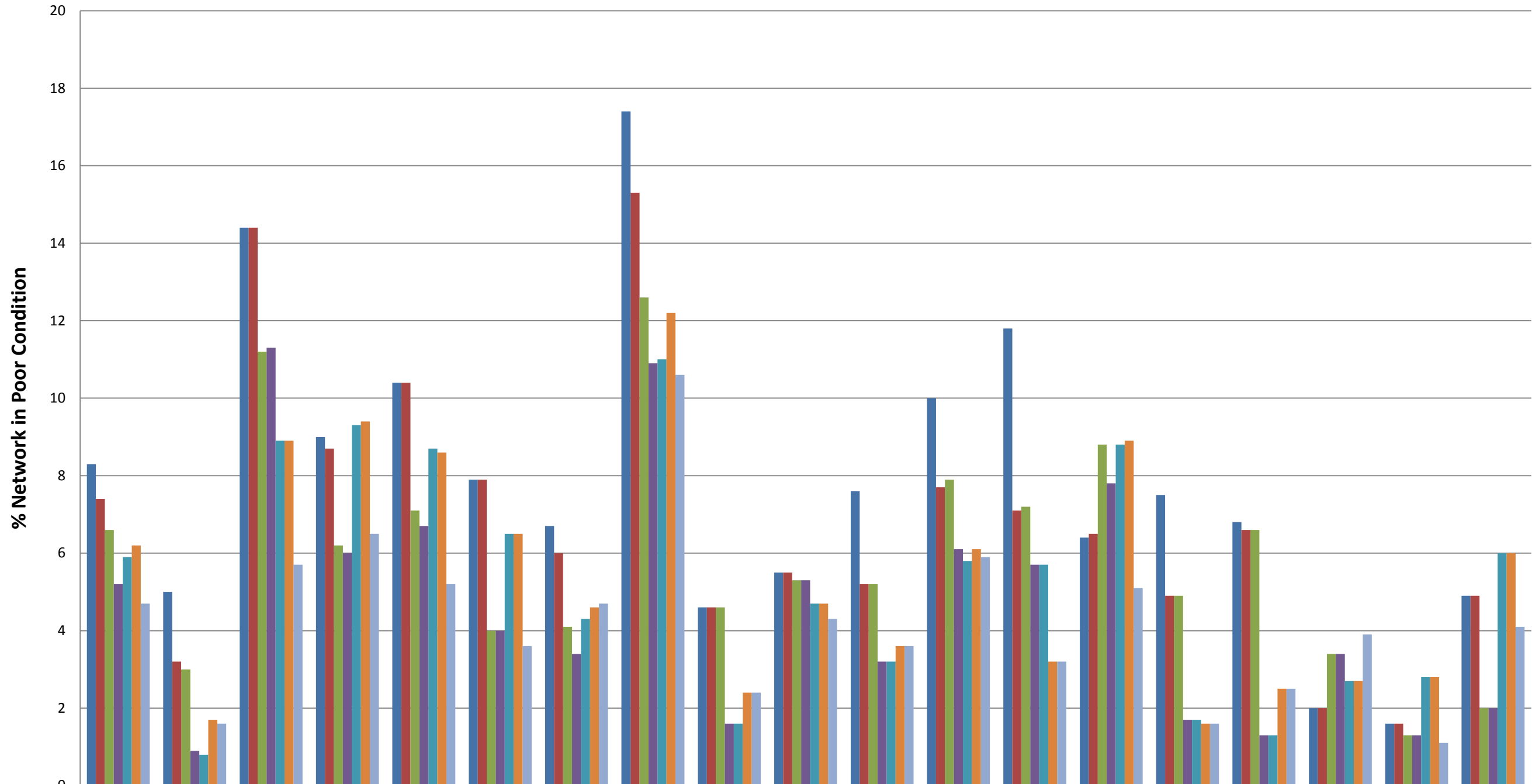
	Wiltshire	Amesbury	Bradford On Avon	Calne	Chippenham	Corsham	Devizes	Malmesbury	Marlborough	Melksham	Pewsey	Royal Wootton Bassett & Cricklade	Salisbury	South West Wiltshire	Southern Wiltshire	Tidworth	Trowbridge	Warminster	Westbury
■ 2009/10	6.4	7.5	11.5	5.3	5.3	6	8.4	13.3	4.4	3.6	8.2	4.5	5.4	4.2	5.4	8.3	4.5	3.2	6.5
■ 2010/11	6.2	6.8	12.5	5.6	4.2	7	7.3	15.7	6.2	4.2	7.8	3.2	5.4	4.2	5.4	5	4.7	3.2	6.5
■ 2011/12	5.2	5.2	5.3	5.6	4.2	7	6	15.7	6.2	3.3	7.8	3.2	2.4	3.1	3.2	4.7	2.9	3.7	3.1
■ 2012/13	3.4	4.8	5.3	2.5	1	2.3	5.1	5	3.5	1.7	4.2	1.3	2.4	3.1	3.2	2.9	2.9	3.7	3.1
■ 2013/14	3.6	5.9	5.9	2.5	1	2.3	3.3	5	3.5	1.8	4.3	1.3	5.5	4.2	2.3	3.3	3.4	4.7	5.8
■ 2014/15	3.7	6.2	5.9	2.5	1.5	2.9	2.7	2.2	4.4	2	4.6	0.7	5.5	4.2	2.3	3.6	3.4	4.7	5.8
■ 2015/16	3.1	5.1	9.6	2.5	1.5	2.9	2.6	2.2	4.4	2.2	4.6	0.7	2.9	2.3	2.6	3.4	1.1	2.3	0.7

% B Road Network in Poor Condition



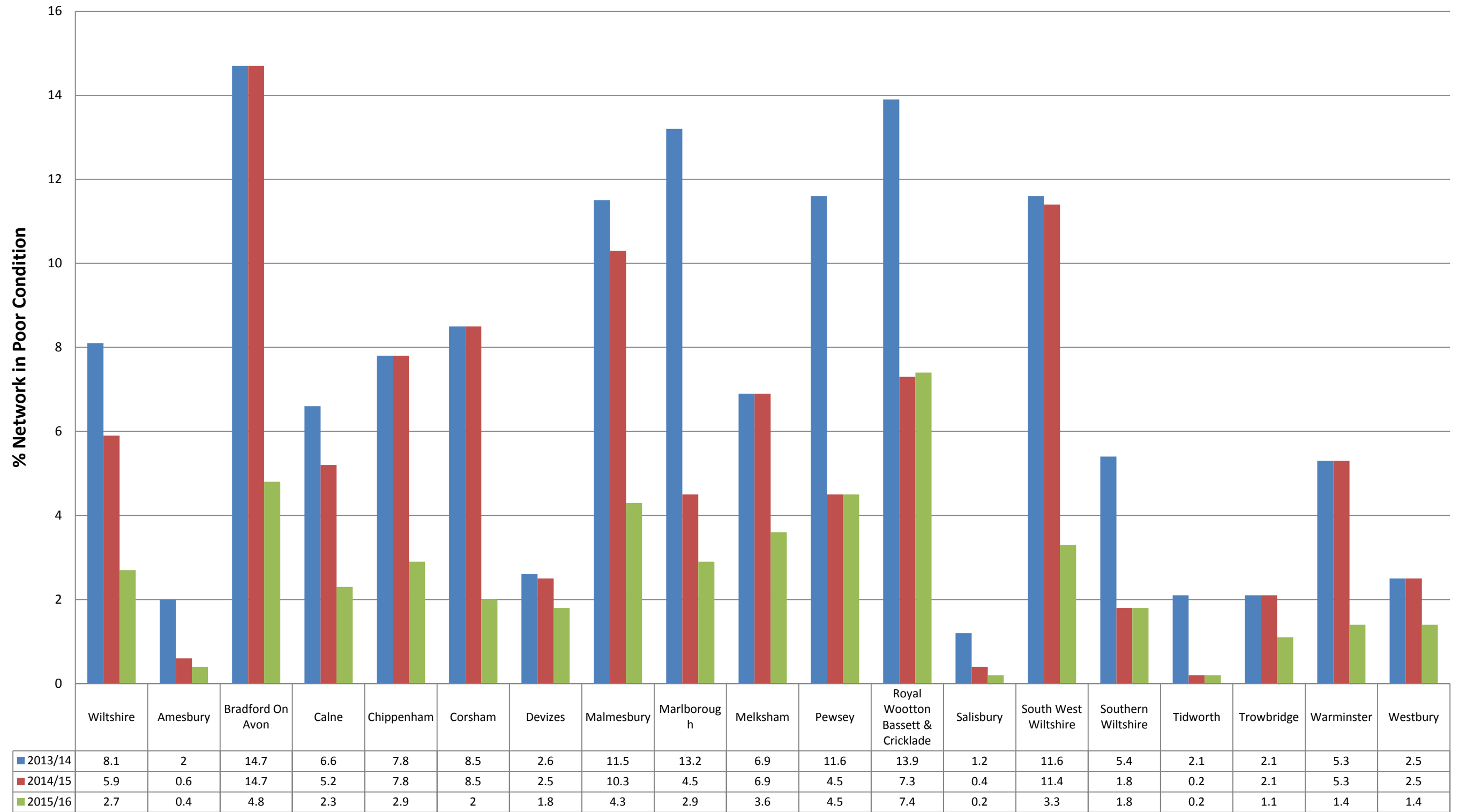
	Wiltshire	Amesbury	Bradford On Avon	Calne	Chippenham	Corsham	Devizes	Malmesbury	Marlborough	Melksham	Pewsey	Royal Wootton Bassett & Cricklade	Salisbury	South West Wiltshire	Southern Wiltshire	Tidworth	Trowbridge	Warminster	Westbury
■ 2009/10	5	3.9	6.7	0	7.8	3.9	4.8	5.4	4.8	2.4	8.4	7	0	1.5	8.8	0	10.6	2.2	4.5
■ 2010/11	4.9	4.2	6.4	0	8.1	1.9	5.2	5.2	4.9	3.1	8.4	8.3	0	1.2	8.3	0	9	2.3	3.6
■ 2011/12	3.9	3.8	5.1	0	6.1	1.6	4.6	4	3.3	3.3	6	6.5	0	1.2	7.6	0	6.5	2	2.6
■ 2012/13	2.9	3.2	2.9	0	4.3	1.7	3.6	3.3	1.9	2.1	3.6	4.1	0	1.3	7.1	0	3.7	1.5	1.8
■ 2013/14	3	3.8	3	0	4.1	2	3.9	3.6	2	4.7	3.2	3.9	0	1.4	8.1	0	3.1	2	2.1
■ 2014/15	3.4	5.1	3.1	0	4.2	1.1	4.4	4.3	1.9	2.8	1.4	4.8	0	1.9	8	0	3.1	2	2.4
■ 2015/16	3.4	5.3	5.7	0	4.3	0.9	4.1	4.6	1.7	2.8	2.3	5	0	2.5	7	0	2.6	1.4	2.1

% C Road Network in Poor Condition



	Wiltshire	Amesbury	Bradford On Avon	Calne	Chippenham	Corsham	Devizes	Malmesbury	Marlborough	Melksham	Pewsey	Royal Wootton Bassett & Cricklade	Salisbury	South West Wiltshire	Southern Wiltshire	Tidworth	Trowbridge	Warminster	Westbury
2009/10	8.3	5	14.4	9	10.4	7.9	6.7	17.4	4.6	5.5	7.6	10	11.8	6.4	7.5	6.8	2	1.6	4.9
2010/11	7.4	3.2	14.4	8.7	10.4	7.9	6	15.3	4.6	5.5	5.2	7.7	7.1	6.5	4.9	6.6	2	1.6	4.9
2011/12	6.6	3	11.2	6.2	7.1	4	4.1	12.6	4.6	5.3	5.2	7.9	7.2	8.8	4.9	6.6	3.4	1.3	2
2012/13	5.2	0.9	11.3	6	6.7	4	3.4	10.9	1.6	5.3	3.2	6.1	5.7	7.8	1.7	1.3	3.4	1.3	2
2013/14	5.9	0.8	8.9	9.3	8.7	6.5	4.3	11	1.6	4.7	3.2	5.8	5.7	8.8	1.7	1.3	2.7	2.8	6
2014/15	6.2	1.7	8.9	9.4	8.6	6.5	4.6	12.2	2.4	4.7	3.6	6.1	3.2	8.9	1.6	2.5	2.7	2.8	6
2015/16	4.7	1.6	5.7	6.5	5.2	3.6	4.7	10.6	2.4	4.3	3.6	5.9	3.2	5.1	1.6	2.5	3.9	1.1	4.1

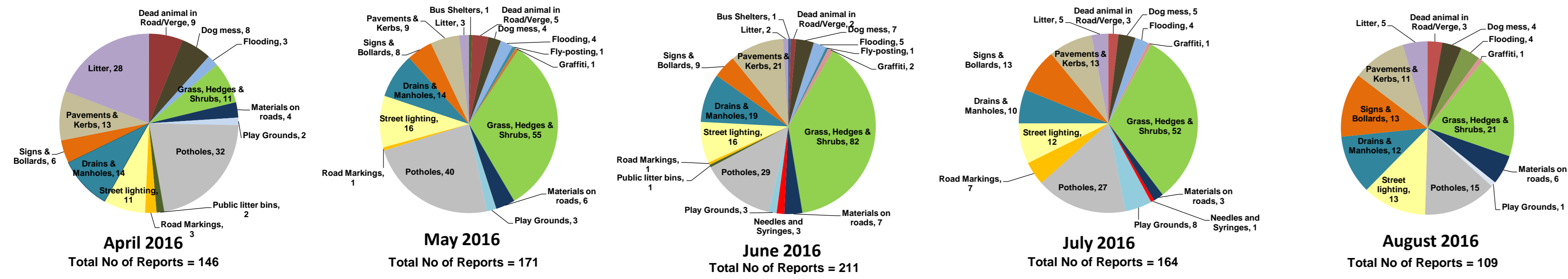
% Unclassified Road Network in Poor Condition



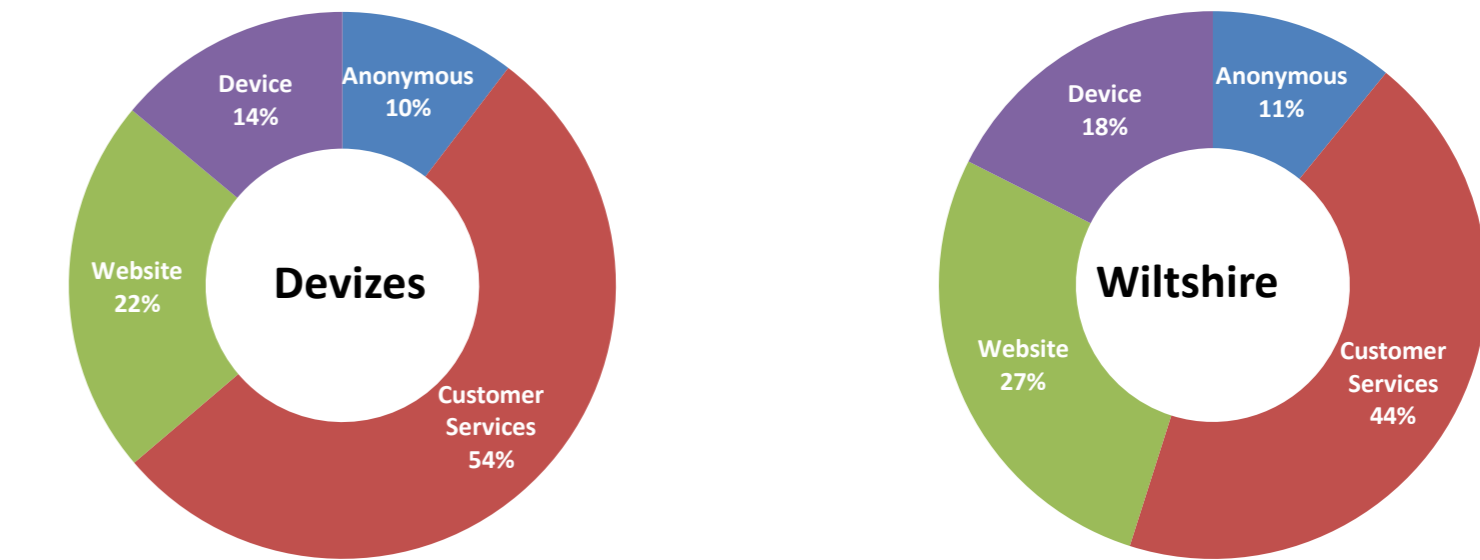
Appendix B: My Wiltshire Statistics



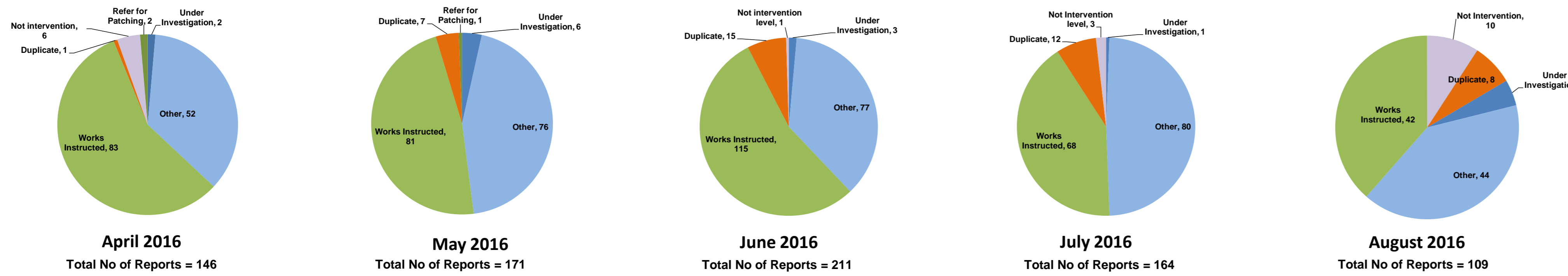
Customer Reported Issues



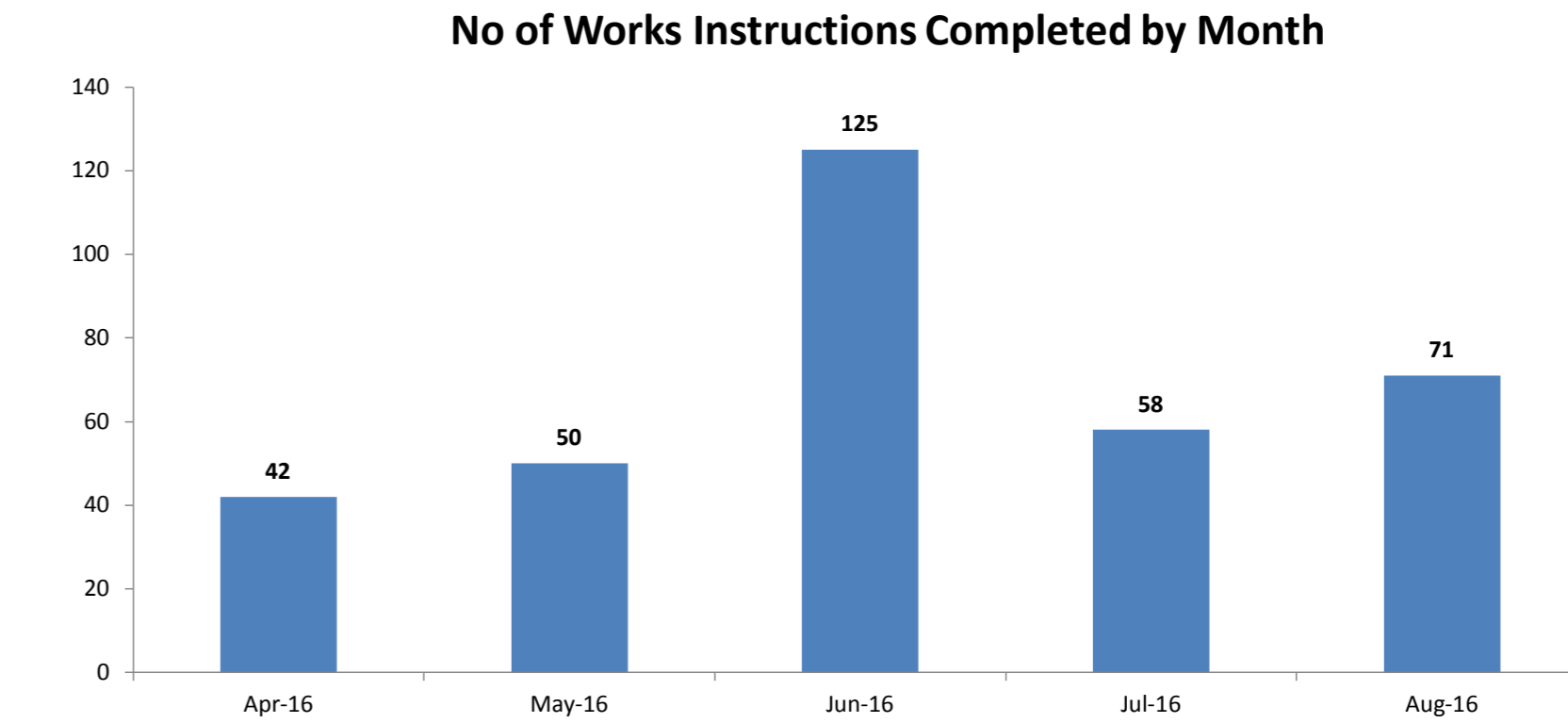
Reporting Channels



Customer Call Outcomes



Completed in Month



Safety Inspections

